



# The Outreach Foundation REACHING OUT



Spring/Summer 2018

381 Riverside Drive, Suite 110 • Franklin, Tennessee 37064 • (615) 778-8881  
info@theoutreachfoundation.org • www.theoutreachfoundation.org

## Seeing God's Faithfulness Through Uncertainty and Challenge 2017 MINISTRY HIGHLIGHTS

**2017** was indeed a year of uncertainty and challenge. Hurricanes Harvey, Irma and Maria left their ugly, painful marks on the United States and Puerto Rico. Wars and threats of wars echoed around the world. Many of our global partners faced pressure and even persecution. In The Outreach Foundation's work, a 14% drop in giving from congregations gave us pause at uncertainty ahead. Many of the churches that we serve here in the States are facing challenges. Yet through it all, we clearly see God's faithfulness and are reminded of the Psalmist's words, "Not to us, O Lord, not to us, but to your name give glory, for the sake of your steadfast love and your faithfulness." (Psalm 115:1) As we look beyond the uncertainty, we truly see God's faithfulness displayed in the work of his people. Read on as we share stories of faithful witness in challenging places, rays of light in a sometimes dark world.

### In God's Faithfulness... Iraq

Life as a Christian in any Muslim majority nation is a challenge. Such is the case in Iraq where the Presbyterian Church of Iraq's three churches (Kirkuk, Baghdad and Basra) boldly engage in ministry in a difficult

context. Although the warring of the previous years is largely over, political and sectarian power struggles still make life uncertain and challenging. Caught in the middle, the Church remains neutral, not allying itself with one interest over the other. Instead, it pursues ministry, primarily to the Muslim population because of its 98% majority. The ministry takes many forms: Christian radio broadcasting, pre- and primary schools, and compassion ministries in homes and hospitals. One ministry in particular embodies Jesus' words in Matthew 25:35-36 – a women's prison ministry.

Over the years, the government has jailed women for everything from begging to being married to ISIS terrorists. Seeing a need for reaching out to these women, Mayada Sarsam, wife of the pastor of the Kirkuk Presbyterian Church, began visiting women in the Kirkuk jail in 2008. Ten years later, the ministry is stronger than ever because the need is greater than ever. Mayada spoke of a 12-year-old girl in jail for public begging, the only way she could sustain herself. She also tells of an entire family, a mother and four daughters, who had been jailed because their son/brother was accused of joining ISIS. Regardless of their offenses, their needs are the same: physical supplies and spiritual and emotional support. Mayada

said in a recent email, "Many of their prayer requests were to see their children, many of whom have four, five or even six children. Those prayer requests were imprinted on my mind and left me contemplating the difficulty of being isolated from family."

In response, Mayada and some women of the church visit with the jailed, listen to their stories, pray with them, provide supplies and gifts, and share a Christian witness of hope in Jesus. Often, their ministry is unique and even incomprehensible to other Muslims. Mayada described a conversation with several Muslims: "They almost always ask if the women we help are only Christians – and when they learn that they're almost exclusively Muslim, they remain silent, often in awe because they can't comprehend why Iraqi Christians would want to help Iraqi Muslims after many of us have been treated so badly."

But not all are Muslim. Mayada recently shared a story of a new detainee who they learned was a Christian. Mayda and her husband, Rev. Haitham, met with her. "The three of us sat down and she shared with us that she was baptized as a child (she is 21 now)," said Mayada. "But she knows nothing about the Christian faith (not even the Lord's Prayer, which is known by many Muslims even). She was arrested for carrying a fake ID. We couldn't provide her with a Bible because she is jailed as a Muslim woman and we don't want to put her in undue danger." Instead, Mayada and the other women of the church will minister and teach her, despite the danger of being caught for proselytizing. But, they fear not. They remember Jesus' words in Matthew 25:40, "Truly I tell you, whatever you did for one of the least of these, you did for me."

Prayer request: *That the church would be protected as they minister to the imprisoned women in Iraq.*



article continued on next page

## About The Outreach Foundation

The Outreach Foundation engages Presbyterians and global partners in proclaiming the good news of Jesus Christ. Because our ministry is Kingdom work, not denominational work, we work with PC (USA), EPC, ECO, Fellowship Community congregations and others. We help congregations build long-term partnerships with the global church that are mutually transformational. Every person, project and partnership we support is directly involved in sharing the Gospel in word and deed.

Our work depends entirely upon the involvement and financial support of mission-minded individuals, congregations and organizations. We receive gifts in our office and disburse them to partners around the world. Established in 1979, The Outreach Foundation is independently governed by a Board of Trustees, all of whom are pastors or officers in their respective congregations.

## Our Mission

Connecting Presbyterians to build the church's capacity to proclaim the Good News of Jesus Christ

## Our Convictions

Committed to the historic Christian faith as it is revealed in God's Word and expressed by the ecumenical creeds and in the Reformed confessions, we affirm that

- Jesus Christ is the only Lord and Savior.
- God's grace in Jesus Christ is for all people.
- The church exists for God's glory and God's mission.
- Discipleship and mission are the calling of every follower of Jesus.
- God connects us in mission through relationships of mutual respect and support.
- The Holy Spirit empowers the church to bear witness to the Good News by its life words and deeds.

## Our Priorities

**Helping** the church live out its missional calling

**Building** the mission capacity of the global church, especially where the church is vulnerable or growing rapidly, as together we

- cultivate deep, long-term relationships
- support the work of missionaries
- help each other equip leaders, plant and build churches, and strengthen ministries of compassion

**Transforming** lives through mission involvement

## Reaching Out

*Reaching Out* is published three times per year by The Outreach Foundation to inform friends and donors about our involvement in God's mission. Subscriptions are offered free of charge upon request. To request a complimentary subscription, inform us of an address or name change, or for more information about our ministry, please contact us.

The Outreach Foundation  
381 Riverside Drive, Suite 110  
Franklin, TN 37064  
(615) 778-8881  
info@theoutreachfoundation.org  
www.theoutreachfoundation.org



Odete and José Pezini



Pezini teaching in Brazil

*article continued from cover*

## In God's Faithfulness... Brazil

It is a challenge being a pastor in any country. In the United States, 70% of pastors report they constantly fight depression and 71% say they are "burned out," as reported by the Schaeffer Institute for Church Leadership Development. To make matters worse, 80% of pastors questioned feel their ministry has negatively affected their families and 72% said the only time they study the Bible is when they are preparing sermons. Such problems are not exclusive to the United States. Although statistics are not as readily available for other countries, we know from our global partners' reports that pastoral mental health issues are epidemic.

What can be done in the face of the crisis? Rev. Dr. José Pezini, Outreach's Portuguese Language Ministry Coordinator, is helping to address the problem in Brazil. Pezini, as he prefers to be called, is a pastor's pastor. A Brazilian himself, Pezini returned to Brazil in 2012 at the request of our partners there after spending 16 years in the United States developing Portuguese congregations and mentoring pastors. After returning to Brazil from his long-term absence, he became deeply concerned about the increase in pastor depression and burnout. Pastor suicides were increasing. Pastors leaving their churches and abandoning their profession was commonplace. Pastors regularly came to him crying out for help.

Committed to addressing this enormous problem, Pezini prayed and discerned with some key colleagues how to approach it. In 2013, he organized a new ministry called SARA, a Portuguese acronym for "serving, helping, refreshing, befriending." Its purpose was to help pastors conquer depression and burnout through a three-part focus on their prayer life, physical and emotional well-being, and intellectual pursuits. Pezini does this through group retreats and personal mentoring. Since 2013, the SARA ministry has brought healing and wholeness to more than 500 pastors across 13 different denominations. The ministry helps pastors

deal with daily struggles, develop enthusiasm and motivation, and deepen their relationship with God.

Pezini shared one example of God's transforming hand: The Rev. Marcos Amaral has pastored Jacarepagua Presbyterian Church in Rio de Janeiro for the past 24 years. Rev. Marcos admitted that for the first 22 years, he saw his pastorate as a "job" and not a calling. Because he was a charismatic leader, the congregation's leadership was pleased with the work he was doing. Personal recognition was the only reason Rev. Marcos continued as a pastor. He confessed that the only times he would pray and meditate on the Word were in preparation of Sunday sermons or Bible classes. His personal relationship with God was perfunctory; he did not take time to be with God to nourish his soul. His church never flourished nor was it a fulfilling ministry.

In September of 2015, he participated in a SARA mentoring and spiritual formation retreat. After the retreat, he realized what he was missing. He was mentored by Pezini who encouraged him in the faith and helped him to develop a discipleship program in his church. He realized what Jesus was calling him to do through the Great Commission – to make disciples. Last summer, Pezini returned to Rev. Marcos' church. As only God can do, in 18 months, he had raised up 70 disciples who were participating in the discipleship ministry. Nine months later, Pezini returned to find that the disciple group had more than doubled, growing to 150. Rev. Marcos also shared that the two church services are overflowing, and new people are coming from far distances to worship.

Pezini is now sharing this gift of ministry with others beyond Brazil. He has consulted with pastor leaders in Mexico and the United States about adopting the SARA model to help overcome the enormous challenge of pastor burnout and to return wholeness and joy to pastors' ministries.

Prayer request: *That God would continue to lift up leaders like Pezini to help renew pastoral ministries.* 🌍

# Celebrating God's Faithfulness in Kenya

**On** April 29, 2018, The Outreach Foundation joined with our partner the Presbyterian Church of East Africa (PCEA) to dedicate the 300th church building that we've built together. The ministry is led by Outreach's East Africa Mission consultants, Stu and Annie Ross. Stu began the ministry "by accident" in 2000. Since then, he and his team have come alongside African congregations and, with the help of U.S. and United Kingdom church teams, have built metal and stone churches all over Kenya, as well as in Tanzania, Uganda and Rwanda. We recently had the opportunity to talk with Stu long distance from his home in Karen, Kenya, about the ministry.

**TOF:** What do you mean you built your first church "by accident"?

**Stu:** I was in Kikuyu, Kenya, in 1999 helping to build the PCEA orthopedic hospital there. About the time we finished the hospital, some people came and told us there was a church they had started to build but they couldn't finish. They asked if we could help. We helped them finish and then found there was a great need for churches and schools in Kenya and East Africa. So, we started building churches and schools!

**TOF:** How did you know where to build churches?

**Stu:** We started working with the Presbyterian Church of East Africa (PCEA). They knew where churches were needed and what the priorities were.

**TOF:** Since then, where have you built the 300 churches?

**Stu:** Everywhere! Kenya is divided up into eight provinces and we've built in all eight. The PCEA has 56 presbyteries, and we've built at least one church in every presbytery. We think it's important that all presbyteries benefit from the ministry.

**TOF:** How do you decide who will get a church?

**Stu:** Requests come before the PCEA's Mission Projects Committee of their Mission Board; that's where our work plan is set. Our priority has been in the outreach and mission areas where the gospel is being spread. By the way, it is important to point out that the churches aren't "free." Each local congregation has a 50% stake in building a church. They provide the land and materials and labor for the foundation. Our Outreach Kenyan staff or visiting church teams then come and help to construct the church.

**TOF:** What is the biggest challenge in building churches?

**Stu:** The challenges are different today than eighteen years ago. At first it was raising funds and recruiting staff and construction teams. Today, it is the distances we have to travel to build churches and the safety of the crew. For example, now we typically drive from five to seven hours to get to the church locations. One time it took us 44 hours one way into Northeast Kenya, where it is very dangerous.

**TOF:** Does that mean it's getting harder to find locations to build churches?

**Stu:** Absolutely not! The demand far exceeds the supply. We have a waiting list for 70 churches, about two years' worth of construction. Christianity is still growing here in Kenya.

**TOF:** Is there one project in particular that is most memorable?

**Stu:** Yes, the church in Bura. We had built a church there, but it was burned down by people who didn't like Christians. Everyone was intent upon rebuilding it, which we did in 2014. But then it was time to go for the dedication. Bura is a six hour drive through

dangerous territory. Because of the security concerns, we drove in a convoy together. The PCEA Moderator and General Secretary were with us for the dedication, so my concerns were elevated. At one point, we were stopped at a road block. A police captain approached my vehicle and I was sure he was going to ask if we were Christians, which would not be favorable in that area. Instead, he said, "Are you Presbyterians?" I was shocked and relieved as he told me that he, too, was Presbyterian from a nearby church! He invited the entire convoy to his church for a luncheon, then they escorted us through the dangerous territory to get to Bura. God is good!

**TOF:** What is so important about the Kenya Church Construction ministry?

**Stu:** Multiplication and capacity building. When a congregation is worshipping in a mud and stick hut that holds 15 people, it is hard to do effective community outreach. But when they get a church building, ministry grows quickly. Because of the congregations that are selected, the focus is outward into the community and its needs. From the start of a church building, often schools are built, fresh water wells are dug, feeding programs are started, and other community programs are begun. The church is the first step in building infrastructure for a village. Recently, Compassion International partnered with a church we built and now 300 children are being fed that were previously starving. We estimate that over time, one dollar of investment creates five dollars of impact with increased capacity. They are modern day "loaves and fishes" miracles.

**TOF:** Blessings upon you and your ministry. What's next?

**Stu:** With God's blessing, 500 church buildings! 🌍

Former church



New church



Celebration





Mozambique



Iraq



South Sudan

# 2017: God's Faithfulness in Uncertainty and Challenge

**As** our cover story indicated, 2017 was a year of uncertainty and challenge not only for the world but The Outreach Foundation as well. Through it all, we experienced God's faithfulness. We continue to be blessed and privileged to connect God's people with God's work in the world. Despite natural calamities, wars, tyrannical governments and more, our global partners continued to do the work they are called by God to do – sharing the Good News with those in need of his saving grace. From training underground church leaders in Iran to feeding starving children and seniors through the church in North Korea to reconciliation ministries in Rwanda, God is unthwarted. Our 1,200 donor partners here remain committed to supporting our global ministry partners. Indeed, God is faithful.

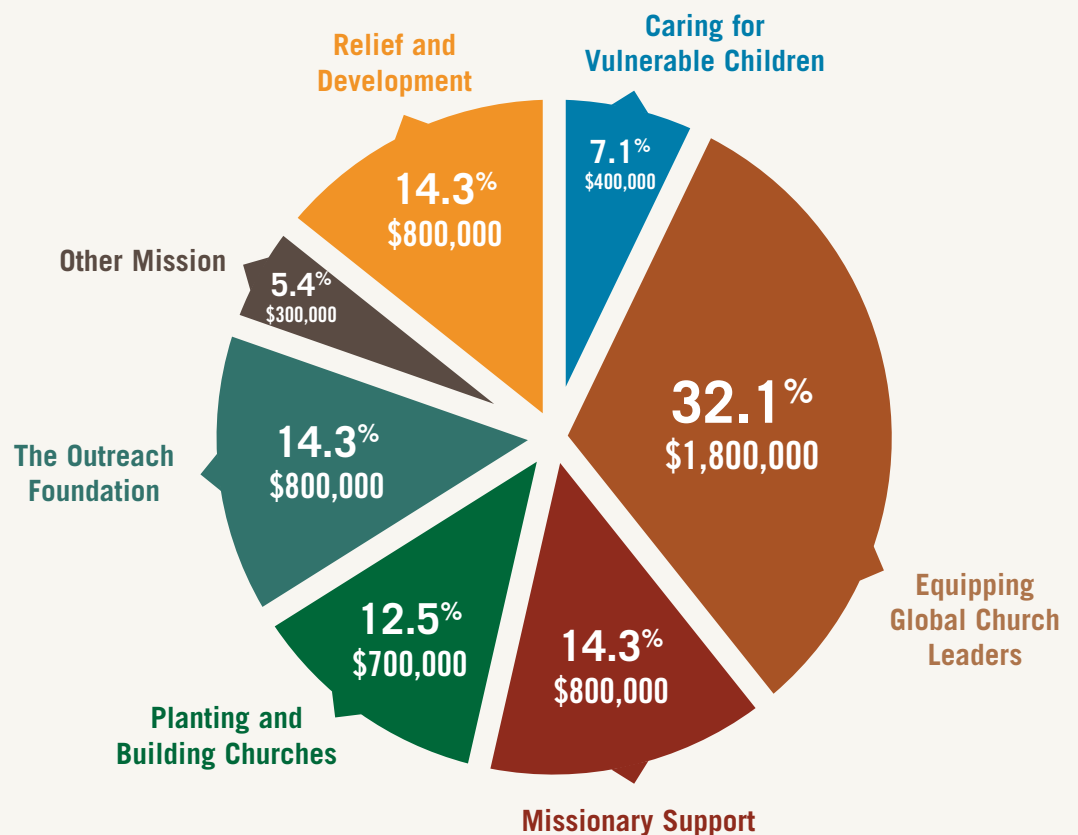
As our partner in ministry, your knowledge of our financial activity is important. We take accountability seriously and strive to provide transparency in all that we do. Due to limited space, this overview is just a brief snapshot. A comprehensive audited financial statement is available on our website ([www.theoutreachfoundation.org](http://www.theoutreachfoundation.org)) or from our office upon request. Or, check out our most recent rating by Charity Navigator at [www.charitynavigator.org](http://www.charitynavigator.org) and type "The Outreach Foundation" in the search bar.

## Contributions Dip to \$5.6 Million

Outreach was blessed with gifts totaling \$5.6 million in 2017. As mentioned earlier, we experienced a 29% decrease in giving compared to the previous year. Two primary factors account for the decrease: congregational giving was down 14% over 2016, and the donor for one of our major initiatives, Dr. Alex Booth, passed away (see Year in Review), affecting giving from individuals. Excluding Dr. Booth's gifts, individual giving was even compared to 2016.

## 2017 Contributions — \$5,600,000

Chart 1

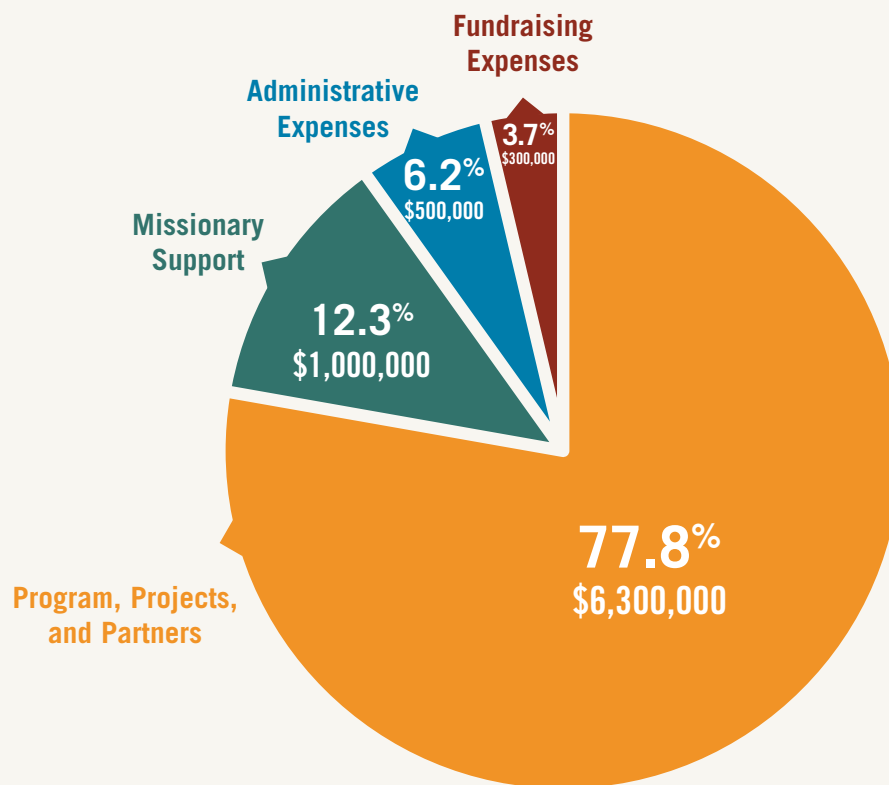




Please use this QR code to donate now to The Outreach Foundation. We appreciate your generous support!

## 2017 Disbursements — \$8,100,000

Chart 2



### We're Blessed by Our Donor Partners

The Outreach Foundation received financial contributions from nearly 1,200 donors in 2017, representing individuals/families, churches and organizations. Supporters represent all 50 states, the District of Columbia, and various foreign countries. Total contributions were \$5.6 million (Chart 1).

A breakdown of the gifts shows the following:

- 50% of giving came from 837 individuals
- 45% of giving came from 306 congregations
- 5% of giving came from 35 organizations, including corporations and non-donor directed foundations

We think of our ministry as Kingdom work, not denominational work. Outreach does not receive financial support from denominational mission offices. Although we work with many different denominations, our primary partners are congregations from the extended Presbyterian family. We joyfully partner with presbyteries and congregations from ECO, EPC, Fellowship Community and PC(USA).

### \$8.1 Million in Disbursements/Expenses

Outreach's focus is connecting God's people with God's work in the world. We receive gifts in our Franklin, Tennessee office and disburse them directly to mission partners around the world. Last year, 90.1% of all disbursements went to our mission partners. We disbursed \$7.3 million in support of missionaries and projects in more than 30 countries. See pages eight and nine for detail on the programs that were supported.

Our total disbursements and expenditures for 2017 were \$8.1 million when administration and fundraising expenses are included (Chart 2). As is typical, total disbursements exceeded funds received during the year. The Outreach Foundation disburses more funds than were received because some contributions have planned disbursements over multiple years and are held in restricted, designated accounts.

### We welcome your partnership

Established in 1979, The Outreach Foundation exists to help you develop relationships and participate with global partners in God's Great Commission. We focus on programs and projects that build our global partners' capacity for evangelism and mission. Your generous gifts help make this possible.

Outreach donors give in various and unique ways. Most gifts are current year cash donations. However, other approaches include securities gifts, IRA beneficiary designations, wills and bequests, and contributions to endowments. Any of these gifts may be restricted by designation or directed to the overall ministry of The Outreach Foundation.

For more information about supporting missionaries and projects or developing mission partnerships through The Outreach Foundation, please contact us at (615) 778-8881 or [info@theoutreachfoundation.org](mailto:info@theoutreachfoundation.org).

### Looking into the Future

We began this article speaking of uncertainty and challenge, and we end it with an optimistic perspective. Knowing that the dynamics of mission and giving are changing, we have embarked upon an ambitious five-

year development plan. We're prayerful that it will enable us to better understand and adapt to those dynamics of change.

### Notes to the Charts

Gifts reported in "The Outreach Foundation" include contributions designated for our operations, as well as funds received without restriction. Contribution designated to be used "where needed most" are considered to be unrestricted and are also reported in this category.

Dollars reported in "Missionary Support" include compensation and benefits for missionary personnel, expenses related to their ministry, and, sometimes, specific projects directly related to their work.

"Other Mission" contributions include a variety of projects for which The Outreach Foundation receives and disburses funds such as distribution of Bibles, funds designated for mission trip scholarships and other projects that complement our program priorities.

More detailed descriptions of our program priorities, as well as specific ministries, are available online at [www.theoutreachfoundation.org](http://www.theoutreachfoundation.org). 🌐

# Our Global Partners Covering Five Continents and Thirty-seven Countries





Belarus

Russia

Syria

Pakistan

Turkey

Lebanon

Syria

Israel & Palestine

Egypt

Iran

Pakistan

China

North Korea

Japan

India

Taiwan

Sudan

Sri Lanka

Malaysia

South Sudan

Ethiopia

Uganda

Kenya

DR Congo

Rwanda

Zambia

Malawi

Mozambique

Zimbabwe

Madagascar

Lesotho

South Africa

Madagascar

# Overview of Mission Opportunities in 2017

**We** give thanks to God that the projects and partners listed here were part of The Outreach Foundation's work around the world in 2017. Thank you for your gifts in support of this Kingdom work.

## OUTREACH FOUNDATION MISSION STAFF

Dr. Frank Dimmock  
Rev. Camille Josey  
Rev. Dr. José Carlos Pezini  
Rev. Dr. Jeff Ritchie  
Rev. Dr. Sasan Tavassoli  
Rev. Dr. Nuhad Tomeh  
Rev. Nedson Zulu and Sebber Banda

## MISSIONARIES AROUND THE WORLD

Beisswenger, Philip and Bacilia » *Guatemala*  
Boyd, Jeff and Christi » *Regional Liaison for Central Africa*  
Collins, Nancy » *Regional Liaison for East Central Africa*  
Cortes-Fuentes, David and Josey Saez-Acevedo » *Cuba*  
Day, Kay » *Rwanda*  
Ellington, Dustin and Sherri » *Zambia*  
Fletcher, John and Gwenda » *DR Congo*  
Gartrell, Gordon and Dorothy » *Brazil*  
Lim, Choon and Yen Hee » *Regional Liaison for East Asia*  
Luke, Todd and Maria » *Mexico*  
McCall, John » *Taiwan*  
Moore, Bill and Ann » *Japan*  
Parker, Scott and Elmarie » *Lebanon*  
Rice, Bob and Kristi » *South Sudan*  
Ross, Stu and Annie » *East Africa Mission Consultants*  
Sivalee, Michael and Irene » *Central Brazil*  
Smith, Alan and Ellen » *Regional Liaison for Eastern Europe*  
Tilton, Doug » *Regional Liaison for Southern Africa*  
Turk, Dan and Elizabeth » *Madagascar*  
Van Brocklin, Gary and Marlene » *Sri Lanka*  
Vandegrift, Keith and Lana Bell » *Cuba*  
Wehmeyer, Don and Martha » *Mexico*  
Weller, Michael and Rachel » *Ethiopia*

\*\*The Outreach Foundation partners with additional missionaries not included in the list above due to their service in sensitive areas of the world.

## PROJECTS INTERNATIONAL

- Bibles for New Christians
- Connecting Mission Leaders Conference
- Developing South-South Mission Partnerships
- Frontier Fellowship
- International Theological Education Network (ITEN)
- Ministry of The Outreach Foundation
- Mission Trip Scholarships for Seminary Students and New Pastors
- Missional Leadership Formation Fund
- Missionary Fund
- Scholarships and Travels for Global Church Leaders
- The Antioch Partners
- Vulnerable Children's Fund

## AFRICA

- The Booth Leadership Initiative (BLI)
- Women's Ministries in Africa

### DR Congo

- Booth Institutes, Kinshasa

### Ethiopia

- Bethel Synod, East Gambela Leadership Training
- Bible Translation Project
- Church and School Construction Projects
- EECMY Low Cost Church Building Program (BLI)
- EECMY Rural Literacy Program (BLI)
- EECMY Training/Skills Training Program (BLI)
- EECMY Graduate School of Theology
- Gambela Health Ministry
- University Student Ministry

### Ghana

- Akrofi-Christaller Institute for Mission, Theology and Culture
- Presbyterian Church of Ghana, Northern Outreach Initiatives (BLI)

### Kenya

- Clean Drinking Water in Kenya
- Graceland Girls' School
- Karai Orphanage and Primary School
- Kenya Girls' Education and Rescue Centers
- Linda Ross Memorial Library
- Nyeri Street Children's Ministry
  - Muindi-Meredith Scholarship Fund

- Post-secondary Scholarships
- Sugarbaker Medical Clinic
- Tumaini and Huruma Children's Homes
- Tumaini E-Learning Program
- Vocational Training Programs/Center
- PCEA Church Construction Projects
- PCEA Evangelist/Skills Training (BLI)
- PCEA School Construction Projects
- Stu Ross

### Lesotho

- Qeme Church Construction

### Madagascar

- FJKM Aids Projects
- FJKM Evangelism and Outreach Ministries
- Ivato Theological Seminary

### Malawi

- Low Cost Church Building (BLI)

### Mozambique

- Evangelist/Skills Training Program (BLI)
- Igreja Presbyterian Church, Holistic Evangelism in Tete Province

### Rwanda

- Busanza Vocational School Construction
- Christian Education for Presbyterian Children
- City Evangelization – Kanombe Community
- EPR Church Construction
- Presbyterian Ministry for Reconciliation and Healing
- Scholarships for Presbyterians at PIASS
- Street Children's Ministry in Kigali, CPAJ

### Sudan and South Sudan

- Giffen Institute of Theology
- Low Cost Church Building (BLI)
- Nile Theological College and Gerief Bible School
- Rebuilding Hope in South Sudan
- Trinity Presbytery Work in South Sudan

### Uganda

- Caring for Vulnerable Children in Kamwenge
- Juna Amagara Children's Home

### Zambia

- CCAP Church Chawama Congregation
- CCAP Synod and Church Construction
- Community Empowerment Center
- Crisis Nurseries in Lusaka

Egypt



Brazil



Kenya





- Inyambo Training Center
- Justo Mwale University
  - Evangelist/Tentmaking Program (BLI)
  - Scholarships for Theology Students
- Low Cost Church Building (BLI)
- Mwandu UCZ Project
- Namumu Orphanage Center
- Siavonga Congregation

#### **Zimbabwe**

- Evangelist/Tentmaking Program (BLI)
- Higher Education for Lovemore Home Boys
- Home of Hope
- Lovemore Home Boys Education
- Low Cost Church Construction (BLI)

### **ASIA**

#### **China**

- Chinese Bibles
- Continuing Education for Chinese Church Leaders
- Mini Libraries for Lay Leaders
- Resources for Lay Leaders
- Theological Education in Jiangsu, Heilongjiang and Shaanxi

#### **India**

- Church Planting Movement in Kolhapur

#### **Malaysia**

- St. Andrews Kuala Lumpur

#### **North Korea**

- Bong Su Church Mission to the Hungry
- Compassion Ministries with Art and Sue Kinsler

#### **Pakistan**

- Adopt a School in Pakistan
- Christian Women's Development Association
- Forman Christian College
- Gujranwala Theological Seminary
- Motorbikes for Rural Pastors
- Pakistan Bible Correspondence School in Faisalabad
- Pakistan Christian Recording Ministries
- Pakistan Prayer Ministry – George and Gail McBane

### **EUROPE**

#### **Belarus and Russia**

- Congregation Projects and Ministries:

- First Baptist Church, Smolensk
- Kostroma Baptist Church
- Davydovo Outreach to Children
- Narnia Center, Children's Ministry and Publishing
- Russian Bibles for Children

#### **Germany**

- Castle Community Church and Church Organ fund

### **MIDDLE EAST**

- Refugees/IDP Crisis

#### **Egypt**

- Bibles for Egypt
- ECO Egypt Initiative
- Egypt Sister Church Partnerships
- Evangelical Theological Seminary in Cairo
- Garbage City Ministry in Cairo, Center of Love
- Mission and Evangelism in Rural Egypt
- New Church Development

#### **Iraq**

- Duhok Relief
- Evangelical Church at Baghdad
- Evangelical Church at Basrah
- Evangelical Church of Kirkuk
- Iraq Appeal Projects

#### **Iran**

- Grants for Iranian Christian Church
- Iranian Ministry Coordinator
- PARS-Multimedia Theological Training Ltd

#### **Israel and Palestine**

- Bethlehem Bible College
- Musalaha – A Ministry of Reconciliation
- Palestinian Bible Society

#### **Lebanon**

- Near East School of Theology
- Philemon Ministries
- Synod of Syria/Lebanon Ministries

#### **Syria**

- Damascus Church
- Good Samaritan Ministry
- Mahardeh Schools Expansion
- Schools for Syrian Refugee Children in Lebanon
- Syria Relief Projects
- Syria Retreat Center

### **THE AMERICAS**

#### **Cuba**

- CANIP, National Presbyterian Camp in Cuba
- Central Presbyterian Church, Matanzas
- Church Construction in Cuba
- Evangelical Theological Seminary at Matanzas
- Guanabacoa Campaign for Hope
- Hurricane Relief in Cuba
- Matanzas Presbytery

#### **Costa Rica**

- Shalom Teaching Ministry

#### **Guatemala**

- Mission and Training Center in Coban

#### **Haiti**

- Haiti Outreach Ministries
  - Baryé Fe High School
  - Build a Home in Haiti
  - Haiti Relief Fund
  - High School Construction
  - Repatriote Ministry Center
  - Student Sponsorships

#### **Mexico**

- Chiapas Missionary Community
- Cisterns Construction with Todd Luke
- San Pablo Presbyterian Theological Seminary
- Sureste Presbyterian Theological Seminary

#### **Brazil**

- IPIB Mission Partnerships
  - New Church Development – Central Brazil (with Michael and Irene Sivalee)
  - Sertão Project – Northeastern Brazil
- SARA Retreat Ministry

#### **United States of America**

- CabWayLinGo Presbyterian Chapel, West Virginia
- Missional Leadership Formation Fund
- Small Church Initiative

\*\*The Outreach Foundation partners with additional projects not included in the list above due to their location in sensitive areas of the world. 🌍

Syria



Ethiopia



Lebanon



## DID YOU KNOW?

Two thirds of the Christians in the world today live in neighborhoods where they are at risk for being poor and belonging to ethnic, linguistic and cultural minorities. (John L. Allen Jr, quoted by the BBC News).

Nearly one quarter of Christians in 2010 lived in countries where they were subject to persecution. (Todd M. Johnson in *Christianity and Freedom: Volume 2, Contemporary Perspectives*)

In recent decades a growing number of Reformed and Presbyterian Christians lived in those countries. (source same as above)

The People's Republic of China is simultaneously the largest self-professing communist state and the home of the largest protestant denomination in any single country, having grown from 60 thousand in 1950 to an estimate of 80 million. (*The Economist*)

The Outreach Foundation has partnerships with Christians in North Korea, Sudan, Pakistan, Iraq and Iran, five of the top ten countries commonly seen as the most dangerous in which to follow Jesus. (*Christianity Today*)

## GOOD TO KNOW

A modern-day hero in Kenya, hope for children in Iraq, the "Apostle Paul" in China... all these stories and more have been shared in Reaching Out Further, our monthly email newsletter. Please contact us at [info@theoutreachfoundation.org](mailto:info@theoutreachfoundation.org) for information on how to subscribe.

*Transforming Mission*, a series of podcasts hosted by Outreach staff sharing stories of God's people doing God's work in the world, is coming! Watch for announcements on our website and via email soon.

We were saddened at the passing of two loyal and generous friends of The Outreach Foundation in 2017, Dr. Alex Booth and Rev. Jane Hays. Dr. Booth was a Trustee Emeritus of The Outreach Foundation and through the years, made significant impact in Sub-Saharan Africa with his focus on church leadership development, new church construction, education and evangelist training. We are working with the Booth Foundation to continue Dr. Booth's legacy. Rev. Hays was deeply committed to church leadership development as well. She also made significant contributions to alleviating poverty, especially with women and children. We are grateful to God for bringing Alex and Jane into the Outreach family. We are all better off for having known them.



## We Have Come Together

**T**umekutana is a Swahili word meaning "We Have Come Together." Founded 11 years ago, the Tumekutana conference began as a gathering of Presbyterian and Reformed women leaders from 16 countries in Africa and 26 denominations. This year's conference, the fourth Tumekutana gathering, will include women from 23 countries and 33 denominations.

Each conference focuses on a theme identified by the African women, relevant to the setting of the gathering. During the conference women receive training, are challenged and encouraged, and establish friendships and networks that go far beyond each meeting. Whether leading women in a denomination of five million people or "only" 250,000, these women leaders have important roles with the potential for significant impact on the women and families in their churches and countries. Most do not have access to regional and international forums other than Tumekutana, which focuses particularly on them.

This year's conference will take place from September 15-21 in Johannesburg, South Africa, with the theme "Woman: You are the Image of God."

*"In the image of God, he created them: male and female he created them."* Genesis 1:27 (NLT)

The conference speakers and facilitators will primarily be African women and leaders. Rev. Najla Kassab, President of the World Communion of Reformed Churches, pastor from the Evangelical Synod of Lebanon and Syria, and friend of The Outreach Foundation, will be a special guest and will lead parts of the meeting. Other leaders include African female pastors and scholars from various countries who will speak to this important theme. There are four denominations in South Africa, all of which will take part in hosting the gathering. Prayers for the gathering are coveted, as well as help in bringing these women together.

The Outreach Foundation values and invests in women in the majority world. Outreach partnered with Tumekutana in Ghana in 2015 and we are pleased to do so in Johannesburg in 2018. Please consider making a gift for this encouraging and empowering conference for African women either online or by mailing a check to the Outreach office designated "Tumekutana." A contribution of \$1,800 will provide transportation, food and lodging for one African woman participant, while a contribution of \$400 will provide a scholarship for the attendance fee to a woman who cannot afford the cost.

For more information on this conference, please contact Caryl Weinberg at [cweinberg@firstpresevanston.org](mailto:cweinberg@firstpresevanston.org) or Ebralie Mwizerwa at [ebralie@theoutreachfoundation.org](mailto:ebralie@theoutreachfoundation.org). 🌍



# A Match Made in Heaven – The Life and Legacy of Reverend Bill and Nancy Warlick



**N**ancy Warlick knew she wanted to be a missionary in Africa when she was 12 and Bill Warlick knew by the time he was in high school. Little did they know God would use them in mighty ways across Africa in their 50 years of mission ministry together.

By 1965, they were serving as missionaries in the Democratic Republic of Congo raising their three children as Congolese. They continued serving for fifty years, primarily in Congo, Zimbabwe, Zambia, Malawi and Mozambique. For nearly 30 years they served as missionary partners of The Outreach Foundation. They fondly look back at their time in ministry as an honor to serve the Lord. “Among the most satisfying memories from a lifetime of ministry,” Nancy related, “was seeing the rapid spread of the Gospel throughout Africa and seeing sons and daughters of pastors we helped train go on to pastor their own

churches.” Bill became best known for helping partners to build churches and train their leaders. Nancy was known far and wide as a tireless defender of and advocate for children.

So committed to global mission, the Warlicks recently told Outreach that they included The Outreach Foundation in a redrafting of their wills with just several simple sentences. By making a planned gift they became members of the Great Commission Society. Their generosity helps to ensure that others after them will carry on the legacy of African mission. Asked why they included Outreach in their wills, Nancy joyfully states, “Jesus is the reason we did this, but The Outreach Foundation made it all possible. We want to see this continue beyond our lifetimes.”

If you would like more information about planned giving and legacy gifts, please contact Ralph Wheeler at 615-778-8881 or [ralph@theoutreachfoundation.org](mailto:ralph@theoutreachfoundation.org).

## Called Out of Fear and into Hope

**“Go and find your Bethlehem.” “Come and see.”** Those words, the first from my pastor-mentor-boss-friend George Moore, the second from Marilyn Borst, ring in my head as I write this. George brought Marilyn to our church for a staff retreat in March, 2010, and my life was forever changed.

It was in Bethlehem where Jesus-in-the-flesh, God *with us*, planted himself and set out from to call us to *come and see*. As it turns out, my Bethlehem journey began in August, 2010, as I went with The Outreach Foundation to see God’s love and faithfulness at work through the National Evangelical Synod of Syria and Lebanon, a church body that had worked through a fifteen-year Lebanese war among the wounded and traumatized of that nation. The pastors they trained walked from town to town ministering where no one else would go.

On that trip I met the Presbyterians of Syria. I spent precious days with the church in Aleppo who were reaching out to Iraqi refugees from another war next door, and saw them being Jesus-in-the-flesh *with* their neighbors. I had the opportunity to be received by an Iraqi family, stripped of all they had left behind, who served us dinner when they had nothing. Such moments of grace and forgiveness shown to people who represented to them their enemy in the war revealed to me in a new way what the communion table means.

With a heart and outlook changed by that initial trip, my faith has only deepened as I have traveled thirteen more times since 2010, all trips to Lebanon, Syria and Iraq. These three places are the Bethlehem that George told me to find and that Marilyn called me to come and see. I have spent countless hours *with* the faithful

who lean into the scriptures: “Do not fear, for I am with you.” They stay planted deep in the soil, not for their glory or purpose, but for the glory of the Lord, “because of [his] love and faithfulness.” I have lunched in the elderly home of Homs, Syria, a place that was the line between enemies, with bullets coming from both ways. *Do not fear, for I am with you*. I have spent the night in Mahardeh in the pastor’s house, mortars exploding through the night. *Do not fear, for I am with you*. I have stood on the rubble of the destroyed church in Aleppo, a place where my team once stood and sang “Amazing Grace.” *Do not fear, for I am with you*. In all those places, through all those times, the church remained and remains still.

Each and every time, for fourteen trips with The Outreach Foundation, I have come home to tell the story of a faithful God, who calls me out of fear and into hope. I am changed, my family is changed, and my church is changed for his glory alone.

### Julie Burgess

West Hills Presbyterian Church, Omaha, Nebraska

Julie Burgess with Aleppo Church leaders Merri and her mother, Salway



## The Outreach Foundation 2018 Board of Trustees

Rev. Dr. Nancy T. Fox, Chair  
National Presbyterian Church • Washington, DC  
Mrs. Betsy Hunt, Vice Chair  
Westminster Presbyterian Church • Nashville, Tennessee  
Mr. W. Powell Jones, Secretary  
First Presbyterian Church • Thomasville, Georgia  
Mr. Hal Sauer, Treasurer  
First Presbyterian Church • Nashville, Tennessee  
Rev. Dr. Nelson Bell  
Highland Park Presbyterian Church • Dallas, Texas  
Rev. Dr. James T. Birchfield  
First Presbyterian Church • Houston, Texas  
Rev. Jerry Deck  
Zionsville Presbyterian Church • Zionsville, Indiana  
Mrs. Peen Hardy  
First Presbyterian Church • Orlando, Florida  
Mr. Walter E. Lewis  
Eastminster Presbyterian Church • Wichita, Kansas  
Mr. T. Berry Long, III  
First Presbyterian Church • Mt. Dora, Florida  
Mrs. Abigail McConnell  
First Presbyterian Church • Colorado Springs, Colorado  
Mr. Thomas F. McDow, III  
Westminster Presbyterian Church • Nashville, Tennessee  
Rev. Dr. Ryan Moore  
First Presbyterian Church • Tulsa, Oklahoma  
Rev. Dr. Mark C. Mueller  
First Presbyterian Church • Valparaiso, Indiana  
Mrs. Caitlin O’Hare  
West Hills Church • Omaha, Nebraska  
Rev. Dr. Robert K. Perkins  
Moraga Valley Presbyterian Church • Moraga, California  
Rev. Wesley Porto  
New Hope Presbyterian Church • Orlando, Florida  
Ms. Kirsten Shaw  
Covenant Presbyterian Church • Jackson, Mississippi  
Ms. Caryl Weinberg  
First Presbyterian Church • Evanston, Illinois  
Mr. Robert N. Wesley, Jr.  
First Presbyterian Church • Winston-Salem, North Carolina  
Rev. Fakhri Yacoub  
The Christian Arabic Church • Richmond, Virginia

### Trustee Emeritus

Mrs. Marj Carpenter  
First Presbyterian Church • Big Spring, Texas

## The Outreach Foundation Staff Leadership Team

Rev. Dr. Rob Weingartner, Executive Director  
Linda Patrick, Chief Financial Officer  
Marilyn Borst, Associate Director for Partnership Development  
Tom Widmer, Director of Development  
Rev. Juan Sarmiento, Associate Director for Mission  
Rev. Steve Bryant, Director Booth Leadership Initiative  
Rev. Dr. William T. Bryant, Executive Director Emeritus

### Franklin Team

Lucy Battle, Accounting/Administrative Assistant  
Lisa Dill, Executive Assistant  
Elizabeth Carter, Communications Coordinator  
Erica Jackson, Database Coordinator  
Ebralie Mwizerwa, Projects Coordinator  
Ralph Wheeler, Donor Relations

### Mission Staff

Rev. Dr. Jeff Ritchie, Mission Advocate  
Rev. Dr. José Carlos Pezini, Portuguese-Language Ministries Coordinator  
Rev. Dr. Sasan Tavassoli, Coordinator of Iranian Ministries  
Rev. Nedson Zulu, Project Manager, Tete Province Mozambique  
Sebber Banda, Public Health Nurse, Tete Province, Mozambique  
Dr. Frank Dimmock, Africa Mission Specialist



# THE OUTREACH FOUNDATION

OF THE PRESBYTERIAN CHURCH, INC.

381 Riverside Drive, Suite 110  
Franklin, TN 37064

ADDRESS SERVICE REQUESTED

## “COME AND SEE”

*“It opened my eyes to a part of the world about which I knew nothing. It showed me the power of God’s grace and the strength of his spirit as I saw what he has done in the lives and missions of the groups we met with.”*  
Outreach traveler from 2017 Holy Land trip



Marilyn Borst with young friends in Egypt

**O**utreach trip leaders connected over 85 travelers with partners all over the world in 2017. Friendships were formed, hearts were changed, lives were transformed. Consider the list of trips below and come with us to encourage and be encouraged!

### COME SEE WHERE GOD IS AT WORK IN THE WORLD!

Faithful Women on the Road: Lebanon  
July 18–31

Cuba Vision Trip  
September 6–14

Brazil:  
Being and Making Disciples:  
The Essence of Mission  
August 24–31

Pakistan  
September 10–20

Zimbabwe and Zambia:  
Ministries Serving Vulnerable  
Children and Families  
August 28–September 10

Iraq: A Journey of Solidarity  
October 8–18

A Mission-Vision Trip to Egypt  
November 1–12

Please contact Lisa Dill at [lisa@theoutreachfoundation.org](mailto:lisa@theoutreachfoundation.org) for more information about travel with The Outreach Foundation. 🌍